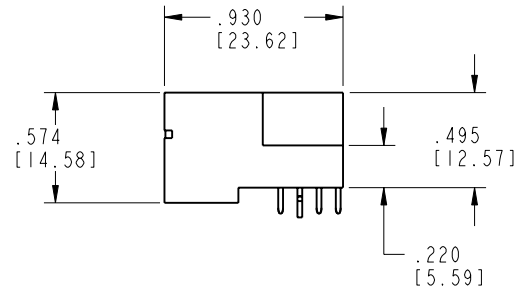
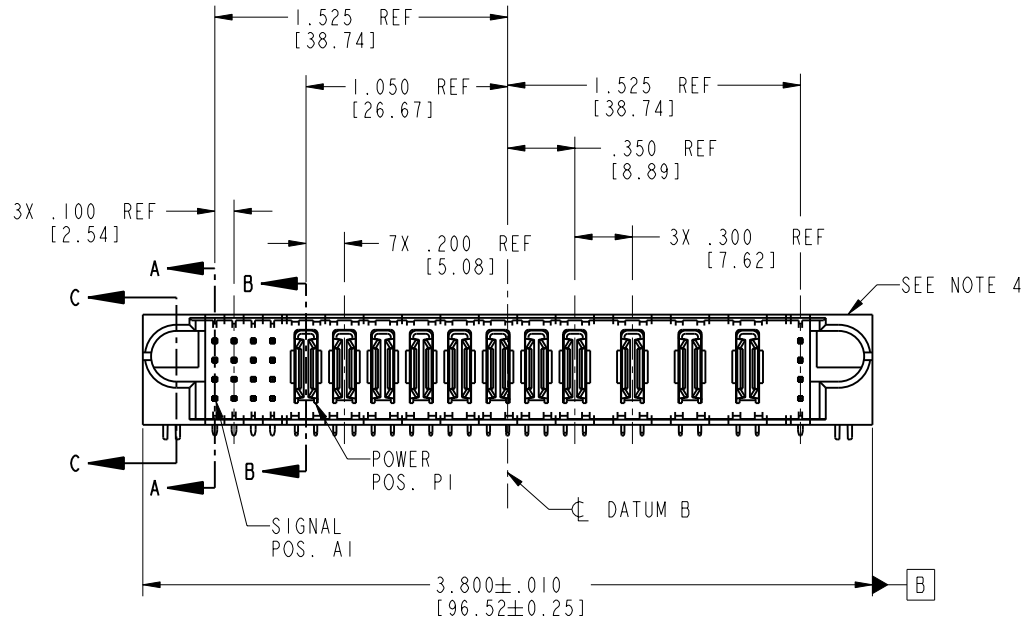
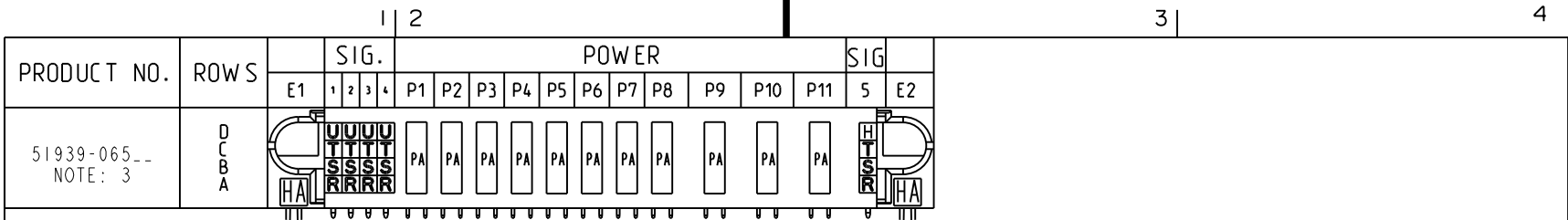


Tous droits strictement réservés. Reproduction ou communication o des liens interdite sous quelque forme que ce soit sans autorisation écrite du propriétaire. Propriété de c FCI. Droits de reproduction FCI.

All rights strictly reserved. Reproduction or issue to third parties in any form whenever is not permitted without written authority from the proprietor. Property of FCI. Copyright FCI.



CODE	DIM "M" MATING LENGTH	CONTACT TYPE
H	.220 [5.59]	SIGNAL
R	.270 [6.86]	SIGNAL
S	.270 [6.86]	SIGNAL
T	.270 [6.86]	SIGNAL
U	.270 [6.86]	SIGNAL
PA	N/A [N/A]	POWER
HA	N/A [N/A]	HOLD-DOWN

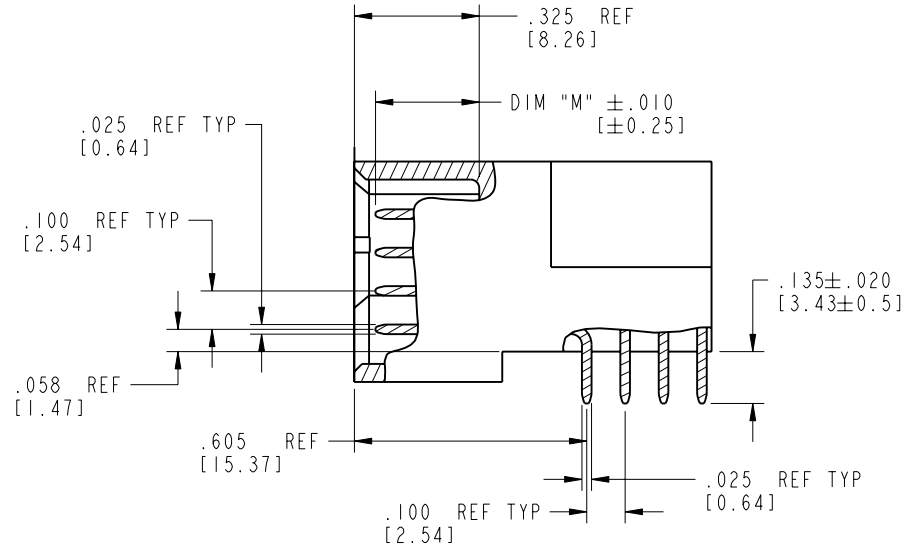
mat'l code				SEE NOTE 2		tolerances unless otherwise specified		CUSTOMER		 www.fciconnect.com	
ltr	ecn no.	dr	date	linear	.XX±.01/0.X±0.3		COPY		title 16S + 8P + 3ACP + 4S		
A	V03-0586	TAB	05/21/03		.XXX±.005/0.XX±0.13		projection		RIGHT ANGLE SOLDER HEADER		
B	V03-0650	TAB	06/13/03	angles	.XXX±.0020/0.XXX±0.051				product family PwrBlade code 213		
C	V03-1166	TAB	10/27/03		0°±2°		INCH/MM		size dwg no		
D	DG06-0014	JMG	01/11/06	dr	T. BRUNGARD	05/21/03	scale 1:1		A 51939-065 sheet 1 of 4		
				engr	M. MOSTOLLER	05/21/03					
				chr	M. MOSTOLLER	05/21/03					
				appd	M. MOSTOLLER	05/21/03					
sheet index	revision sheet	D	D	D	D	D					
		1	2	3	4						

Tous droits strictement réservés. Reproduction ou communication o des liers interdite sous quelque forme que ce soit sans autorisation écrite du propriétaire. Propriété de c FCI. Droits de reproduction FCI.

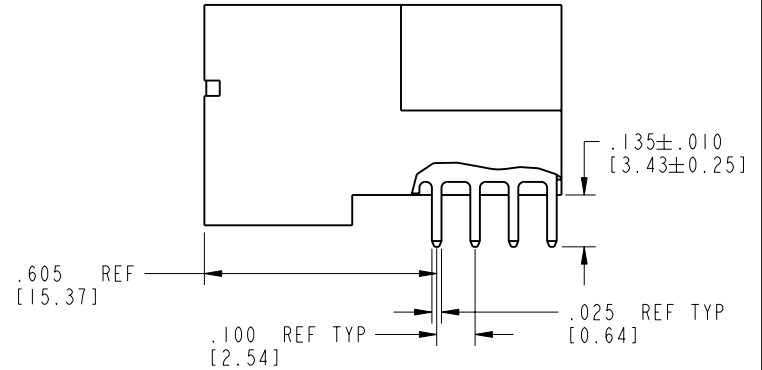
All rights strictly reserved. Reproduction or issue to third parties in any form, whatever is not permitted without written authority from the proprietor. Property of FCI. Copyright FCI.

PRODUCT NUMBER

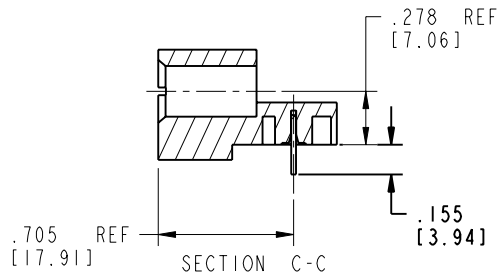
51939-065__
NOTE: 3




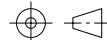
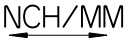
BROKEN-OUT SECTION A-A
SCALE 2:1



BROKEN-OUT SECTION B-B
SCALE 2:1



SECTION C-C

mat'l code		SEE NOTE 2		tolerances unless otherwise specified		CUSTOMER		 FCI www.fciconnect.com	
lfr	ecn no.	dr	date	linear	.XX±.01/0.X±0.3	COPY			
D				projection	.XXX±.005/0.XX±0.13			title 16S + 8P + 3ACP + 4S RIGHT ANGLE SOLDER HEADER	
				angles	.XXX±.0020/0.XXX±0.051			product family PwrBlade code 213	
				dr	T. BRUNGARD 05/21/03	scale 1:1		size 213	
				engr	M. MOSTOLLER 05/21/03			sheet 2 of 4	
				chr	M. MOSTOLLER 05/21/03			A 51939-065	
				appd	M. MOSTOLLER 05/21/03				
sheet index	revision sheet								

cage code 22526

Pro/E

PDM: Rev:D

STATUS: Released

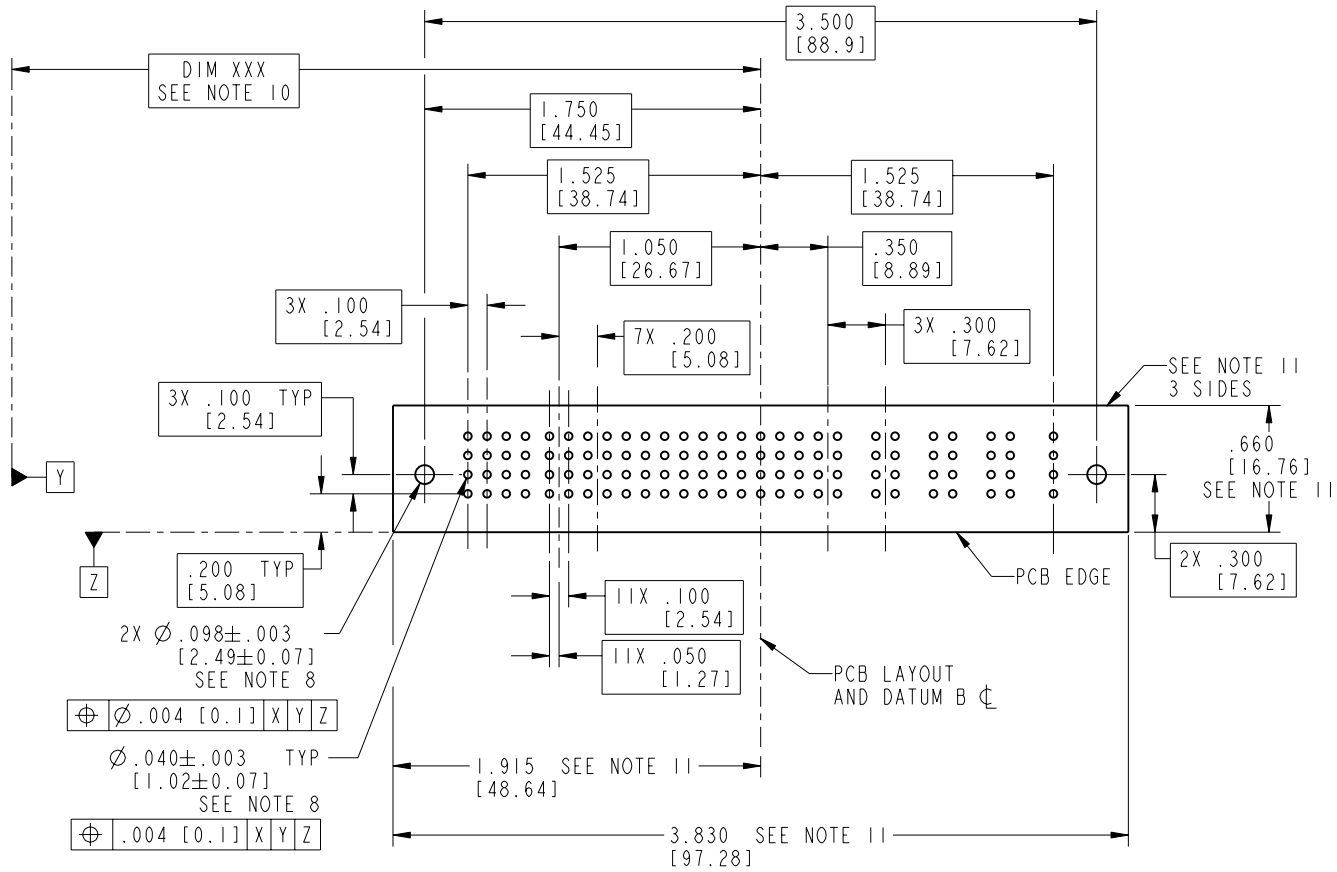
Printed: Aug 14, 2007

Tous droits strictement réservés. Reproduction ou communication o des liens interdite sous quelque forme que ce soit sans autorisation écrite du propriétaire. Propriété de c FCI. Droits de reproduction FCI.

All rights strictly reserved. Reproduction or issue to third parties in any form, whenever is not permitted without written authority from the proprietor. Property of FCI. Copyright FCI.



PRODUCT NUMBER
51939-065--
NOTE: 3



RECOMMENDED PCB LAYOUT

mat'l code		SEE NOTE 2		tolerances unless otherwise specified		CUSTOMER		 www.fciconnect.com	
lfr	ecn no.	dr	date	linear	.XX±.01/0.X±0.3	COPY			
D				angles	.XXX±.005/0.XX±0.13	projection		 title 16S + 8P + 3ACP + 4S RIGHT ANGLE SOLDER HEADER	
				dr	.XXX±.0020/0.XXX±0.051	INCH/MM			
				engr	T. BRUNGARD 05/21/03	scale		product family	
				chr	M. MOSTOLLER 05/21/03	1:1		PwrBlade	
				appd	M. MOSTOLLER 05/21/03			code	
sheet index	revision sheet							size	
								dwg no	
								A 51939-065	
								sheet	
								3 of 4	

cage code 22526

Pro/E

PDM: Rev:D

STATUS: Released

Printed: Aug 14, 2007

Tous droits strictement reserves. Reproduction ou communication o des liers interdite sous quelque forme que ce soit sans autorisation ecrite du proprietaire. Propriete de c FCI. Droits de reproduction FCI.



All rights strictly reserved. Reproduction or issue to third parties in any form, whatever is not permitted without written authority from the proprietor. Property of FCI. Copyright FCI.

PRODUCT NUMBER
51939-065__
NOTE: 3

NOTES:

1. DIMENSIONS AND TOLERANCES ARE IN ACCORDANCE WITH ASME Y14.5M, 1994 UNLESS OTHERWISE SPECIFIED.

CONNECTOR NOTES:

- 2. HOUSING MATERIAL: UL 94 V-0 GLASS FILLED
HIGH-TEMP THERMOPLASTIC
POWER CONTACT MATERIAL: COPPER ALLOY
SIGNAL PIN MATERIAL: COPPER ALLOY
- 3. 51939-065;51939-065LF;51939-065GLF PLATING SPEC. SEE PRINT:10064183
- 4. MANUFACTURER'S NAME, P/N, AND DATE CODE TO APPEAR ON THIS SURFACE.
- 5. PRODUCT SPECIFICATION GS-12-149.
APPLICATION SPECIFICATION BUS-20-067.
- 6. PACKAGED IN TRAYS.
PCB NOTES:
- 7. ALL HOLE DIAMETERS ARE FINISHED HOLE SIZE.
- 8. MOUNTING HOLES, WHERE APPLICABLE, ARE UNPLATED.
- 9. $\varnothing .0453 \pm .0010$ [1.151 \pm 0.025] DRILLED HOLES PLATED WITH .0003 [0.008] MIN SnPb OVER .001 [0.03] TO .003 [0.08] Cu PLATING TO ACHIEVE $\varnothing .040 \pm .003$ [1.02 \pm .07] HOLE.
- 10. "DIM XXX" TO BE DETERMINED BY THE CUSTOMER.
- 11. CONNECTOR KEEP-OUT ZONE.

mat'l code		SEE NOTE 2		tolerances unless otherwise specified		CUSTOMER		 www.fciconnect.com	
lfr	ecn no.	dr	date	linear	.XX±.01/0.X±0.3	COPY			
D				projection	.XXX±.005/0.XX±0.13			title 16S + 8P + 3ACP + 4S RIGHT ANGLE SOLDER HEADER	
				angles	.XXX±.0020/0.XXX±0.051 0°+?°			product family PwrBlade code 213	
				dr	T. BRUNGARD 05/21/03	INCH/MM		size dwg no	
				engr	M. MOSTOLLER 05/21/03	scale 1:1		A 51939-065	
				chr	M. MOSTOLLER 05/21/03			sheet 4 of 4	
				appd	M. MOSTOLLER 05/21/03				
sheet index	revision sheet								

coge code 22526

Pro/E

PDM: Rev:D

STATUS: Released

Printed: Aug 14, 2007